

Application of Acryl-R Seam Sealer

Acryl-R is currently used to seal the exterior seams of the Airstream trailer. Acryl-R has been used since 1986 and has taken the place of Ten-x and Cool Seal. While there are many substitutions such as Silicon and ParaBond, no product substitutes the exact look, and characteristics of the Acryl-R.

Parts Required:

28430W -01 Acryl-R Seam Sealer

28430W-02 Applicator Head

Suggested Supplies

Isopropyl Alcohol / mineral spirits

Soap & water

Soft Rags

Gloves

Use

For use on segment seams, Airstream built windows, beltline, rubrail, tail lights, clearance lights, exterior connections and components



Applicator

Acryl-R Seam Sealer

Step One

- Attach applicator to Acryl-R can by screwing clockwise
- Prime applicator head by squeezing handle- takes several



attempts. As the applicator primes, the handle will slightly stiffen

- Use a disposable rag to catch the Acryl-R when priming.
- Warm Acryl-R flows better and easier than cool.
- During cool conditions the seam sealer can be warmed by placing indoors overnight prior to application

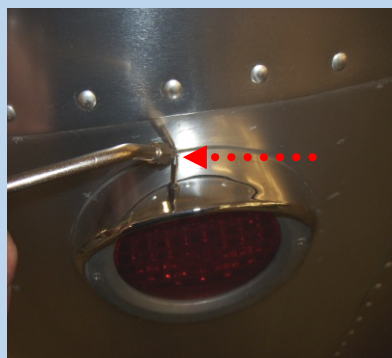


Step Two

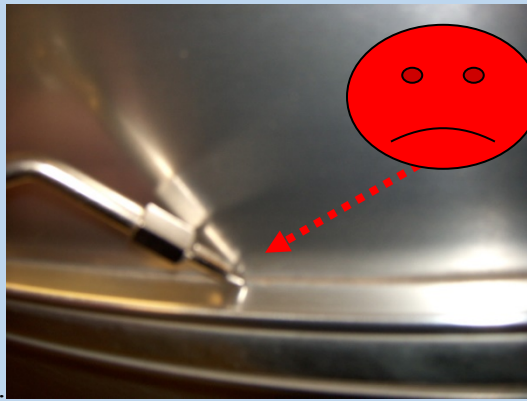
- Using soap and water clean the area where new Acryl-R will be applied.
- Wipe down seams denatured alcohol. Avoid any solvents that contain oil or petroleum based.
- All loose sealer must be removed
- Always wipe with the direction of the grain.

Step Three

- Starting at a seam or joint, apply the seam sealer by **pulling/dragging** the applicator head while simultaneously gently squeezing the trigger. The greater the force on the handle the quicker you must move to avoid uneven sealer
- Warm sealer will flow smoother and easier than cool. If sealer is cool, place in a warm place until sealer warms
- For best performance, the applicator head should be kept around a 30-degree angle.
- Practice on a flat surface or inconspicuous area until this is mastered. It will take a little patience and determination.
- Use tape to protect surrounding areas from scratches until skill is mastered.
 - Remember one slip of the applicator can cause permanent scratches



Hold the applicator head away from the aluminum on the trailer. If the head encounters the skin while pulling/ dragging may result in an unwanted scratch in the aluminum.



Troubleshooting

- Uneven / messy Acryl-R
 - Pushing nozzle instead of pulling
 - Stopping too often
 - Head speed not correspondent to pressure on handle
- Acryl-R not adhering to surface.
 - Dirty surface
 - Wet surface
- Acryl-R applicator handle won't move
 - Contents have dried out.
- Acryl-R continues to run from can when not pulling handle
 - Can almost empty
 - Air in can

Clean up

Clean up surfaces and tools with denatured alcohol or mineral spirits. Always wipe in the direction of the grain on the aluminum.

Storage

- Keep away from heat, sparks and open flame.
- Protect from freezing temperatures.
- Always place pin in end of nozzle to protect from drying out.
- Keeping can in sealed plastic bag will extend shelf life.

Pin

