

Question-Baraldi Range Exhaust

Baraldi Range Exhaust-Lights not working in hood over stove.

While camping this past weekend both lights quit working over the stove? I find it kind a of hard to believe both light bulbs burnt out at the same time. I check all of the fuses in the fuse panel, any ideas?

There is a separate inline fuse in the fan assembly that protects Both the lights and the fan, you might want to look at that before you get to the more complicated diagnostics



Locating the Fuse

Both the lights and fan are controlled by one inline fuse.

To locate the fuse you will need to remove the metal filter on the bottom of range exhaust.

Remove filter



View under range exhaust with filter removed



Locating The Fuse

- The fuse can be accessed under the grease screen. It's in that little black box at the back right corner of the compartment.
- It's behind the small round screw in black cover.
- It will take a 5amp. Fuse---The early fans came with a 3amp. Fuse –Biraldi indicated that with both lights on and starting fan ,it could cause the 3 amp fuse to blow.



Changing Range Exhaust Light



To access the light bulb you will have to remove the trim ring and glass cover. Using a small blade screw driver, Insert tip of screw driver in one of the three slots and pry down on the ring. (Be careful not to drop the glass lenses). Once the trim ring and lenses have been removed you can now replace the bulb and reinstall the cover.



Now would also be a good time to consider upgrading to a LED Bulb, they use less energy and produce very little heat.



LED replacement -----10W Halogen Bulb
15751w-09 511297-100

Cleaning Range Exhaust Screen



Now that you are working on your range exhaust, have you cleaned the filter lately? If you do a lot of cooking grease can build up on your filter resulting in unwanted odors in your trailer or attract insects.

One way to clean your filter is by using a good degreaser such as (the biodegradable, non-toxic)- Simple Green solution.

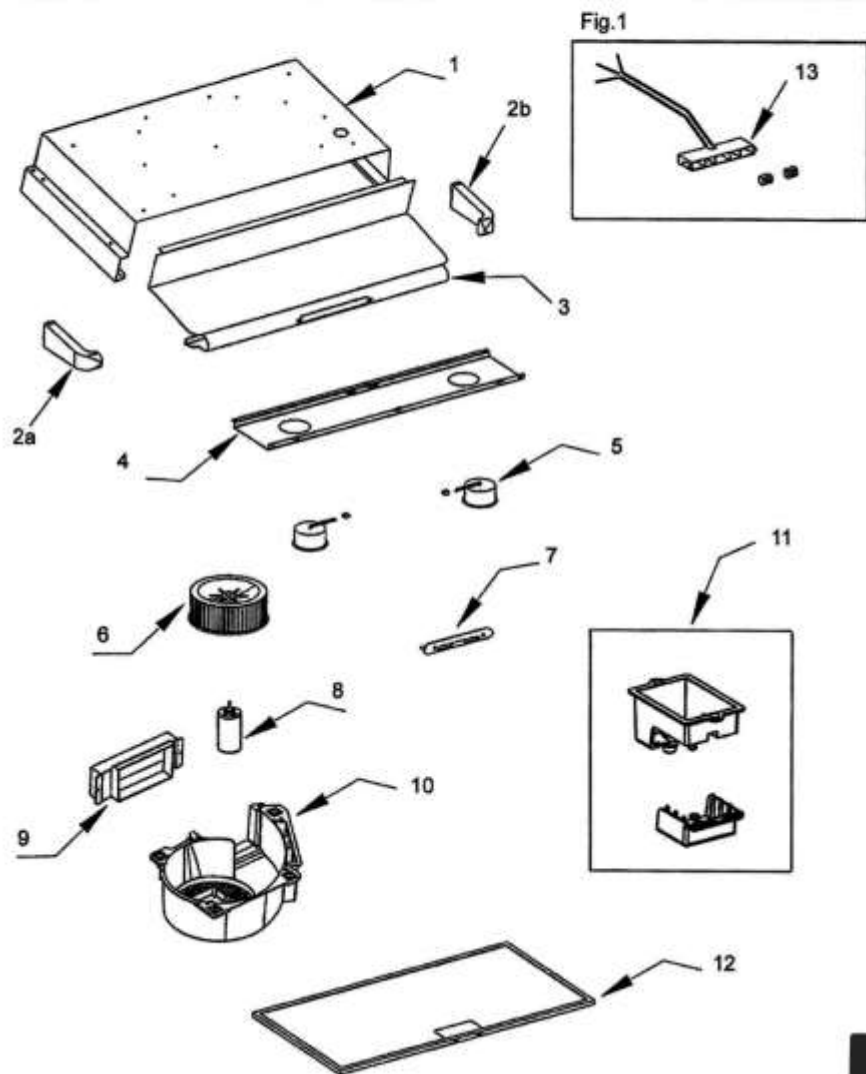
Get something similar to a baking pan/cookie sheet with an edge around and place filter in pan and apply the degreaser to both sides and let set for 1-2 minutes and rinse with water. You will also want to remove any remaining grease on the frame housing.

Fan Information

TRADEMARK: MARQUE DÉPOSÉE: 		
MODEL: SWING MODÈLE: SWING		
CATALOG NUMBER: 161116 02 01A <input type="checkbox"/> NUMÉRO DE CATALOGUE: 161116 01 01A <input type="checkbox"/> 512210 <input type="checkbox"/>		PRODUCTION DATE DATE DE PRODUCTION: 2011-2012-2013-2014 1-2-3-4-5-6-7-8-9-10-11-12
VOLT: 12 DC	SPEED (RPM): 2150 VITESSE	
WATT: 18W motor + 2 x 10W lamps	LAMPS LAMPES 2X10 W MAX	
Rating (A) / (W) 4.5 / 60		
FOR RESIDENTIAL USE ONLY Pour usage résidentiel seulement	THERMALLY PROTECTED THERMIQUEMENT PROTÉGÉ	

CAUTION - Risk of electric shock, connect to a class 2 or isolated 12 VDC source	Keep protective barrier in place after servicing Barrière protectrice de substance en place après entretien
ATTENTION - Risque de choc électrique, connecter à une classe 2 ou isolé 12 VDC source	Maximum fuse size for use with this rangehood is 5 A, no-time delay La taille maximum de fusible pour l'usage avec ce capot de gamme est 5 A, aucun temps de retard
CONVIENT À L'EMPLOI DANS UNE ZONE CUISSON Ménagère	It needs frequent cleaning of all grease from fan and all other grease - laden surfaces. Moreover, it needs frequent removal and cleaning of any filter unit provided. Be careful when you use cleaning agents or detergents.
SUITABLE FOR USE IN A DOMESTIC COOKING ZONE	Il a besoin du nettoyage fréquent de toute la graisse de ventilateur et de tout autre graisse - surfaces chargées. D'ailleurs, il a besoin de déplacement fréquent et de le nettoyage de toutes les unités de filtrage fournies. Soyez attention quand vous employez des produits ou des détergents d'épuration.
CAUTION - To reduce the risk of fire, use lamp max 10 W, trade size T3	
ATTENTION - pour réduire le risque du feu, utiliser une ampoule maximum 10 W, T3 conforme à l'utilisation de taille	

Exhaust Fan Parts List

 Modello
SWING AMERICA AIR STREAM

 Mod.
SWING AMERICA AIR STREAM

Net price list for spare parts

N°	Code	Description
1	03SWIFUS508GR	Metal body 50,8
2a	04SWITESTDXBLVO	Right plastic side part (color black) VO
2b	04SWITESTSXBLVO	Left plastic side part (color black) VO
3	03SWIFRO508	S/Steel frontal part 50,8
4	03SWIFAFA508ST	S/Steel halogen lamps holder
5	09FARETTO10	Halogen lamp 10W
6	04VENDES150	Fan 150 Dx
7	04SWIMASINBLBAVO	Plastic cover for switches (color black) VO
8	09MOT12V	12V electric motor
9	04RIDPOST12VUSA	Plastic reduction for backside
10	04COCCAMPERUSA	Inside plastic body
11	04SCAPOFU5VA	Plastic box for fuse
12	04FP46427SUL	Alluminium panel 465X275
13	05SWIIMPE6212WI	12V complete electrical svstem